

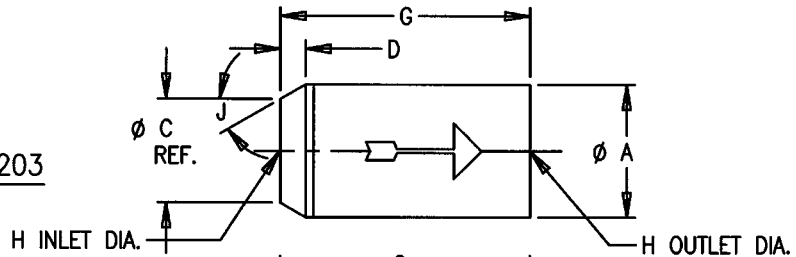


KEPNER PRODUCTS COMPANY

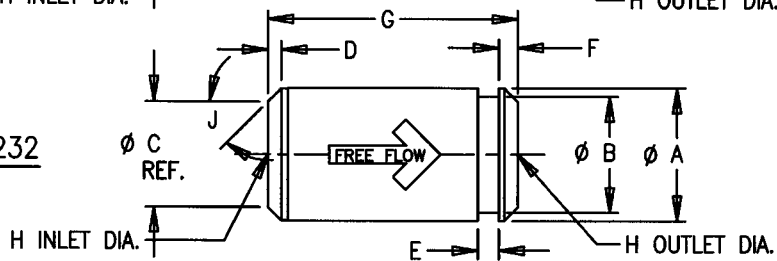
ESTABLISHED IN 1948

Dimensions: Series 2200 Kepsel® Cartridge Check and Relief Valve

MODEL #
2201 & 2203



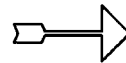
MODEL #
2206 TO 2232



NOTES:

- 1) ALL DIMENSIONS ARE FOR REFERENCE ONLY.
- 2) VALVE MUST BE HELD END-FOR-END IN USE.

DIRECTION OF FREE FLOW



MODEL	A	B	C REF	D	E	F	G	H	J	EXTERNAL SEAL O-RING SIZE
2201	.311 .308	--	.17	.12	--	--	.630 .621	.09	30°	008
2203	.498 .494	--	.30	.09	--	--	.844 .835	.22	45°	012
2206	.655 .650	.543 .538	.47	.09	.10	.11	1.224 1.215	.30	45°	015
2208	.811 .806	.699 .695	.62	.09	.10	.11	1.500 1.491	.39	45°	017
2210	.999 .994	.886 .881	.81	.08	.10	.11	1.554 1.545	.48	45°	020
2212	1.217 1.212	1.106 1.102	1.03	.09	.10	.11	1.940 1.931	.61	45°	024
2216	1.686 1.681	1.516 1.511	1.41	.14	.13	.17	2.625 2.615	.84	45°	128
2224	2.311 2.306	2.142 2.136	2.03	.14	.13	.17	3.254 3.245	1.31	45°	138
2232	3.311 3.306	3.070 3.066	2.94	.18	.19	.26	4.505 4.496	1.78	45°	234

Valve performance is dependent on proper selection, application, installation and maintenance. Consult Factory.

Kepner Products Company, Villa Park, IL 630.279.1550 E-mail: kepner@kepner.com