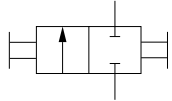


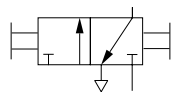
# Excelon® lockout valves

1/4" to 3/4" port size

## ISO Symbols



2-Port/2-Position



3-Port/2-Position



**Excelon® design allows in-line or modular installation**

**Valves can be locked in the closed position only**

**Excelon® 3-port/2-position lockout valves help conform to OSHA Lockout regulations in USA market.**

### Technical data

Fluid: Compressed air

Maximum Pressure: 250 psig (17 bar)

Operating Temperature\*: -30° to 150°F (-34° to 65°C)

\* Air supply must be dry enough to avoid ice formation at temperatures below 35°F (2°C).

Cv factor from IN to OUT ports

1/4" ports: 4.0

3/8" ports: 8.0

1/2" ports: 8.1

3/4" ports: 7.7

Cv factor from OUT to Exhaust ports on 3-port/2-position valves: 0.2.

Exhaust port threads on T72T and T73T models: 10-32

Exhaust port threads on T74T models:

1/8 PTF with PTF main ports

1/8" ISO Rc with ISO G and ISO Rc main ports

Hole diameter in slide for padlock 72 and 73: 5/16" (8 mm)

Hole diameter in slide for padlock: 0.29" (7.5 mm)

### Materials

Body: Zinc

Slide: Acetal plastic

Elastomers: Nitrile

## Ordering Information

Models listed are with PTF threads.

Port Size	2-Port/2-Position	3-Port/2-Position (OSHA)	3-Port/2-Position	Weight lbs (kg)
	No exhaust outlet	Unthreaded exhaust port	Threaded exhaust port	
1/4"	T72B-2AA-P1N	T72E-2AA-P1N	T72T-2AA-P1N	0.79 (0.36)
3/8"	T72B-3AA-P1N	T72E-2AA-P1N	T72T-3AA-P1N	0.86 (0.39)
Port Size	2-Port/2-Position	3-Port/2-Position (OSHA)	3-Port/2-Position	Weight lbs (kg)
	No exhaust outlet	Unthreaded exhaust outlet	Threaded exhaust port	
1/4"	T73B-2AA-P1N	T73E-2AA-P1N	T73T-2AA-P1N	0.7 (0.3)
3/8"	T73B-3AA-P1N	T73E-3AA-P1N	T73T-3AA-P1N	0.7 (0.3)
1/2"	T73B-4AA-P1N	T73E-4AA-P1N	T73T-4AA-P1N	0.7 (0.3)
Port Size	2-Port/2-Position	3-Port/2-Position (OSHA)	3-Port/2-Position	Weight lbs (kg)
	Padlock closed only	Padlock closed only	Padlock closed only	
3/8"	T74B-3AA-P1N	T74E-3AA-P1N	T74T-3AA-P1N	0.69 (0.32)
1/2"	T74B-4AA-P1N	T74E-4AA-P1N	T74T-4AA-P1N	0.65 (0.30)
3/4"	T74B-6AA-P1N	T74E-6AA-P1N	T74T-6AA-P1N	0.62 (0.28)

## Service Kits

Type	Part Number
T72	4384-513
T73B (black slide)	4384-610
T73E (yellow slide)	4384-611
T73T (red slide)	4384-612
T74B (black slide)	4384-711
T74E (yellow slide)	4384-710
T74T (red slide)	4384-713

Service kit includes seals and slide.

# Excelon® lockout valves

1/4" to 3/4" port size

Dimensions in inches (mm)

