

Excelon® modular system

L72M/C, L73M/C, L74M/C Lubricators

Excelon® design allows in-line or modular installation

Quick release bayonet bowl.

Flow sensor provides a nearly constant oil/air ratio over a wide range of flows

Highly visible, prismatic liquid level indicator lens on metal bowls

All round (360°) visibility of sight-feed dome for ease of drip rate setting

Micro-fog and oil-fog

Technical data

Fluid:

Compressed air

Maximum pressure:

Transparent bowl: 150 psig (10 bar)

Metal bowl: 250 psig (17 bar)

Operating temperature*:

(72) -30° to 150°F (-34° to 66°C)

(73, 74) -30° to 175°F (-34° to 80°C)

*Air supply must be dry enough to avoid ice formation at temperatures below 35°F (2°C).

Materials

L72

Body: zinc

Elastomers: nitrile

Transparent bowl: polycarbonate

Metal bowl: zinc

Liquid level indicator lens (metal bowl): transparent nylon

Sight-feed dome: transparent nylon

Elastomers: neoprene, nitrile & Geolast

L73, L74

Body: aluminum

Transparent bowl: polycarbonate

Guarded transparent bowl: polycarbonate with aluminum guard

Metal bowl: aluminum

Liquid level indicator lens (metal bowl): transparent nylon

Sight-feed dome: transparent nylon

Elastomers: neoprene & nitrile

Microfog: Fine mist lubrication with oil particle size typically less than 2µm. For use in lengthy air lines or multiple valve and cylinder circuits.

Oilfog: Suitable for heavy lubrication systems such as single cylinder air motors and air tools.



Ordering Information

Models listed include PTF threads, manual drain, and metal bowl with plastic liquid level indicator.

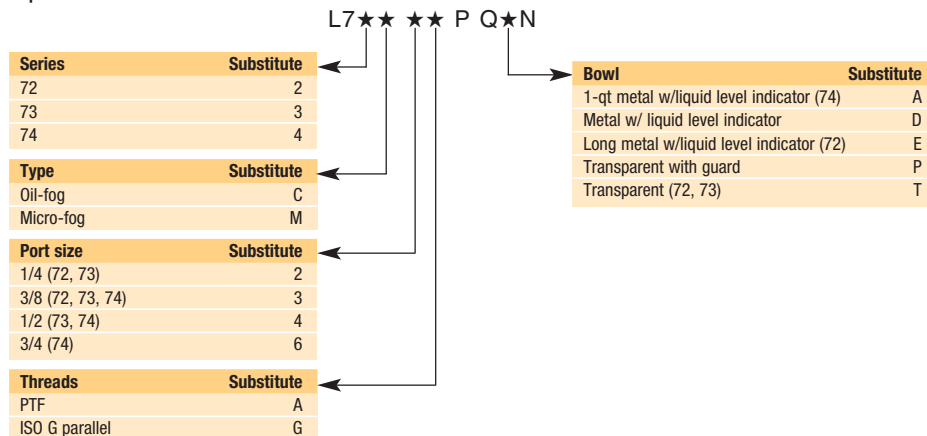
Type	Port Size	Model*	Flow** scfm (dm3/s)	Nominal bowl capacity (oz)	Weight lb (kg)†
Micro-Fog	1/4"	L72M 2AP QEN	51 (24)	2.2	1.1 (0.49)
Oil Fog	1/4"	L72C 2AP QEN	51 (24)	2.2	1.1 (0.49)
Micro Fog	3/8"	L73M 3AP QDN	60 (28)	3.5	1.1 (0.50)
Oil Fog	3/8"	L73C 3AP QDN	60 (28)	3.5	1.1 (0.50)
Micro Fog	3/8"	L74M 3AP QDN	114 (54)	7.0	1.70 (0.77)
Oil Fog	3/8"	L74C 3AP QDN	118 (56)	7.0	1.70 (0.77)
Micro Fog	1/2"	L74M 4AP QDN	154 (73)	7.0	1.61 (0.73)
Oil Fog	1/2"	L74C 4AP QDN	192 (91)	7.0	1.61 (0.73)

* Models listed in the order table must not be located downstream of frequently cycling directional control valves. Order the optional bi-directional Oil-Fog Lubricator for use under such conditions.

**Typical flow with 90 psig (6.3 bar) inlet pressure and a pressure drop of 7 psig (0.5 bar).

† (74) Lubricators with 1 quart (1 liter) metal bowl: Add 2.01 lbs (0.91 kg).

Options selector



Excelon® modular system

L72M/C, L73M/C, L74M/C Lubricators

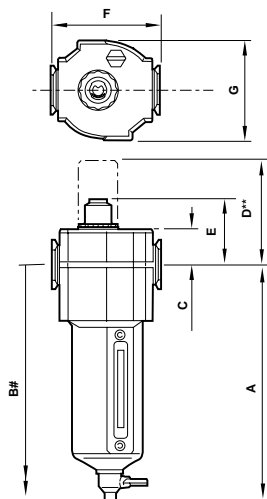
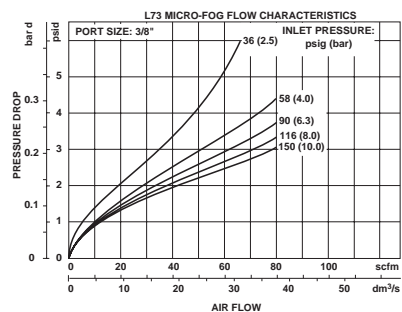
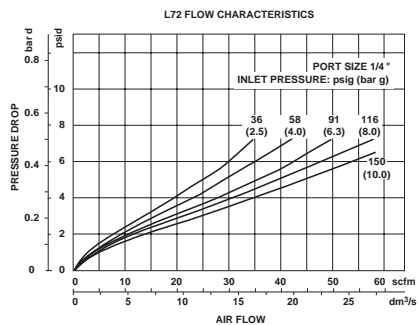
Dimensions in inches.

Accessories

	Wall mounting bracket*	Pipe adapters (quantity of 1) (NPT)	Quikclamp®	Quikclamp® and wall bracket	Quick fill nipple	Service Kit Seal and gasket
L72	4224-50	4215-02 (1/4) 4215-03 (3/8)	4214-51	4214-52		4382-500 (72M/C)
L73	4424-50	4315-01 (1/4) 4315-02 (3/8) 4315-03 (1/2) 4315-04 (3/4)	4314-51	4314-52	18-011-024	4382-600 (73M/C)
L74	4324-50	4315-02 (3/8) 4315-03 (1/2) 4315-04 (3/4)	4314-51	4314-52 4314-55 (1-qt bowl)	18-011-024	4382-700 (74M/C)

* Bracket kit does not include wall mounting screws.

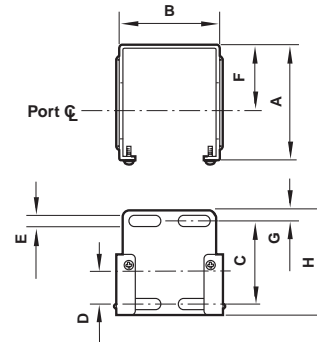
Typical Performance Characteristics



** Optional Pyrex sight-feed dome.
Minimum clearance required to remove bowl.

	A	B	C	D	E	F	G
72	5.83	9.13	0.75	2.52	1.61	1.97	1.89
73	6.15	10.04	0.98	2.76	1.85	2.68	2.44
74	6.95	10.87	0.98	2.68	1.85	3.15	2.91
	A	B	C	D	E	F	G
74 w/1 qt bowl closed bottom	11.14	20.0	0.98	2.68	1.85	3.15	2.91
74 w/1 qt bowl w/drain	11.93	20.0	0.98	2.68	1.85	3.15	2.91

Mounting bracket



Series	A	B	C	D	E	F	G	H
72	2.36	1.65	1.54	0.73	0.16	1.50	0.24	2.01
73	2.64	2.36	1.89	0.75	0.28	1.50	0.24	2.40
74	3.11	2.72	1.97	0.79	0.20	2.01	0.24	2.40

