

Excelon® modular system

R72G, R73G, R74G Pressure regulators

Excelon® design allows in-line or modular installation

Full flow gauge ports

Balanced valve design minimizes effect of variation in the inlet pressure on the outlet pressure

Standard relieving models allow reduction of downstream pressure when the system is dead-ended



Technical data

Fluid:

Compressed air

Maximum pressure:

300 psig (20 bar)

Operating temperature*:

-30° to 175°F (-34° to 80°C)

*Air supply must be dry enough to avoid ice formation at temperatures below 35°F (2°C).

Materials

R72G

Body: zinc

Bonnet: acetal (Zinc on 250 psi model)

Valve: brass

Elastomers: nitrile

Bottom plug: acetal

R73G, R74G

Body: aluminum

Bonnet: aluminum or zinc

Elastomers: nitrile

Bottom plug: acetal

Ordering Information

Models listed include uni-directional flow, PTF threads, knob adjustment, relieving diaphragm, 5 to 150 psig (0.3 to 10 bar) outlet pressure adjustment range*, with gauge.

| Port Size | Model | Flow† scfm (dm ³ /s) | Weight lb (kg) |
|-----------|--------------|---------------------------------|----------------|
| 1/4" | R72G 2AK RMG | 70 (33) | 0.79 (0.36) |
| 1/4" | R73G 2AK RMG | 91 (43) | 1.36 (0.6) |
| 3/8" | R73G 3AK RMG | 144 (68) | 1.36 (0.6) |
| 3/8" | R74G 3AK RMG | 208 (98) | 1.80 (0.82) |
| 1/2" | R74G 4AK RMG | 220 (105) | 1.77 (0.80) |
| 3/4" | R74G 6AK RMG | 220 (105) | 1.73 (0.78) |

† Typical flow with 150 psig (10 bar) inlet pressure, 90 psig (6.3 bar) set pressure and a 15 psig (1 bar) drop from set.

Options selector

| Series | Substitute | Gauge | Substitute |
|-------------------|------------|-------------------------|------------|
| 72 | 2 | With | G |
| 73 | 3 | Without | N |
| 74 | 4 | | |
| Port size | Substitute | Outlet press adj range* | Substitute |
| 1/4" (72, 73) | 2 | 5 to 30 psig (72) | C |
| 3/8" (72, 73, 74) | 3 | 5 to 60 psig | F |
| 1/2" (73, 74) | 4 | 5 to 150 psig | M |
| 3/4" (74) | 6 | 10 to 250 psig** | S |
| Threads | Substitute | Adjustment | Substitute |
| PTF | A | Knob | K |
| ISO G parallel | G | T-bar | T |

*Outlet pressure can be adjusted to pressures in excess of, and less than, those specified. Do not use these units to control pressures outside of the specified ranges.

**Units with 250 psig outlet pressure range are available only with the T-bar adjustment, substitute T at the 7th position and S at the 9th position.

Excelon® modular system

R72G, R73G, R74G Pressure regulators

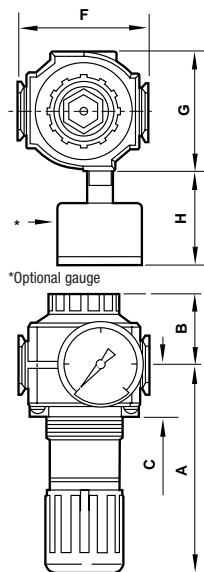
Dimensions in inches.

Accessories

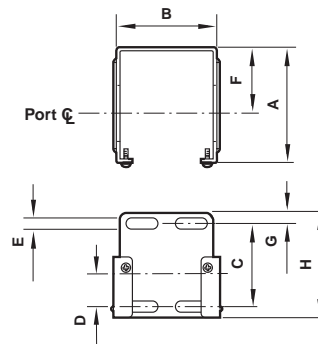
| | Wall mounting bracket* | Neck mounting bracket | Gauge 0 ... 160 psig | Panel nut | Tamper resistant cover and seal wire | Pipe adapters (quantity of 1) (NPT) | Quikclamp® | Quikclamp® and wall bracket | Service kit |
|------|------------------------|-----------------------|----------------------|-----------|--------------------------------------|--|------------|-----------------------------|-------------|
| R72G | 4224-50 | 74316-50 | 18-013-212 | 4248-89 | 4255-51 | 4215-02 (1/4) 4215-03 (3/8) | 4214-51 | 4214-52 | 4381-500 |
| R73G | 4424-50 | 4461-50 | 18-013-209 | 5191-88 | 4455-51 | 4315-01 (1/4) 4315-02 (3/8) 4315-03 (1/2) 4315-04 (3/4) | 4314-51 | 4314-52 | 4381-600 |
| R74G | 4324-50 | 4368-51 | 18-013-209 | 4348-89 | 4355-51 | 4315-02 (3/8) 4315-03 (1/2) 4315-04 (3/4) | 4314-51 | 4314-52 | 4381-700 |

* Bracket kit does not include wall mounting screws.

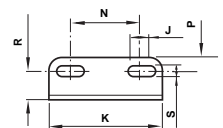
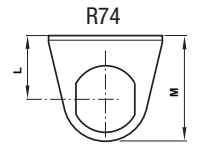
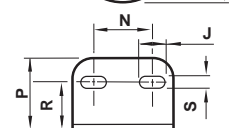
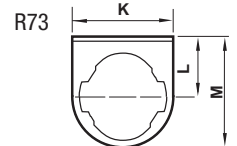
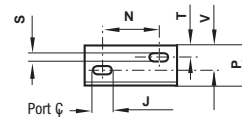
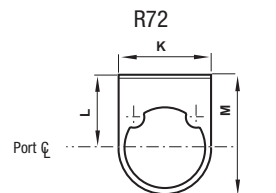
Neck mounting brackets



Mounting bracket



| Series | A | B | C | D | E | F | G | H |
|--------|------|------|------|------|------|------|------|------|
| 72 | 2.36 | 1.65 | 1.54 | 0.73 | 0.16 | 1.50 | 0.24 | 2.01 |
| 73 | 2.64 | 2.36 | 1.89 | 0.75 | 0.28 | 1.50 | 0.24 | 2.40 |
| 74 | 3.11 | 2.72 | 1.97 | 0.79 | 0.20 | 2.01 | 0.24 | 2.40 |



| | A | B | C | F | G | H | Panel Ø | Panel depth |
|----|------|------|------|------|------|------|---------|-------------|
| 72 | 2.87 | 1.30 | 1.02 | 1.97 | 1.89 | 1.38 | 1.57 | 0 to .16 |
| 73 | 3.78 | 1.54 | 1.22 | 2.68 | 2.44 | 2.20 | 1.89 | .07 to .25 |
| 74 | 5.00 | 1.69 | 1.22 | 3.15 | 2.91 | 2.20 | 2.05 | .07 to .25 |

| Series | J | K | L | M | N | P | R | S | T | V |
|--------|------|------|------|------|------|------|------|------|------|------|
| 72 | 0.31 | 1.93 | 1.50 | 2.50 | 1.18 | 0.94 | - | 0.17 | 0.31 | 0.59 |
| 73 | 0.67 | 2.52 | 1.50 | 2.76 | 1.50 | 1.50 | 0.98 | 0.28 | - | - |
| 74 | 0.94 | 3.50 | 2.05 | 3.39 | 2.20 | 1.38 | 0.91 | 0.28 | - | - |

