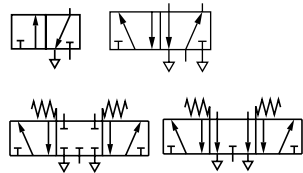


Super X

Manually & mechanically actuated spool valve

In-line

3/2, 5/2 & 5/3, 1/8" & 1/4" NPT



Wide range of operators

Suitable for multi-directional flow and dual supply applications

High flow capacity

Lightweight corrosion resistant materials

*Applies to emergency stop valves only

Technical data

Medium:

Compressed air, filtered, lubricated and non-lubricated

Operation:

Spool Valve, directly and indirectly actuated

Mounting:

Through-holes in valve body

Port Size:

1/8" and 1/4" NPT

Operating Pressure:

Maximum 26.5" Hg to 145 psig (-0.9 to 10 bar)

Flow Characteristics:

Size	Function	Cv	l/min
1/8" NPT	3/2, 5/2, 5/3	0.34	335
1/4" NPT	3/2, 5/2, 5/3	0.98	965

Operating Temperature:

32°F* to 158°F (0°C* to 70°C)

* Consult our Technical Service for use below 35°F (2°C).

Materials

Diecast aluminum alloy body, aluminum or glass filled nylon end covers, nitrile rubber seals

Alternative models

Solenoid and pilot operated version – see web site

Mechanical

Model	Port size	Function	Actuation	Wt lb	Service kits	Drawing number
03 0400 22	1/8 NPT	3/2	Plunger /Spring	0.31	03 8408 02	A, 1
03 0417 22	1/8 NPT	3/2	Plunger /Pilot	0.44	03 8408 02	C, 2
03 0402 22	1/8 NPT	3/2	Roller /Spring	0.31	03 8408 02	A, 3
03 0411 22	1/8 NPT	3/2	Roller lever /Spring	0.46	03 8408 02	A, 6
03 0293 22	1/8 NPT	3/2	Roller lever (heavy duty) /Spring	0.46	03 8408 02	A, 4
03 0423 22	1/8 NPT	3/2	Sensitive roller lever /Spring	0.55	–	A, 5
03 0409 22	1/8 NPT	3/2	Roller /Pilot	0.4	03 8408 02	C, 3
03 0427 22	1/8 NPT	3/2	Roller lever /Pilot	0.55	03 8408 02	C, 6
03 0410 22	1/8 NPT	3/2	One-way trip /Spring	0.46	03 8408 02	A, 7
03 0294 22	1/8 NPT	3/2	One-way trip (heavy duty) /Spring	0.46	03 8408 02	A, 8
03 0432 22	1/8 NPT	3/2	Antenna /Spring	0.46	–	A, 9
X3 0440 22	1/8 NPT	5/2	Plunger /Spring	0.55	03 8408 02	E, 1
X3 0457 22	1/8 NPT	5/2	Plunger /Pilot	0.68	03 8408 02	G, 2
X3 0442 22	1/8 NPT	5/2	Roller /Spring	0.55	03 8408 02	E, 3
X3 0451 22	1/8 NPT	5/2	Roller lever /Spring	0.71	03 8408 02	E, 6
X3 0393 22	1/8 NPT	5/2	Roller lever (heavy duty) /Spring	0.64	03 8408 02	E, 4
X3 0463 22	1/8 NPT	5/2	Sensitive roller lever /Spring	0.79	–	E, 5
X3 0449 22	1/8 NPT	5/2	Roller /Pilot	0.64	03 8408 02	G, 3
X3 0467 22	1/8 NPT	5/2	Roller lever /Pilot	0.79	03 8408 02	G, 6
X3 0450 22	1/8 NPT	5/2	One-way trip /Spring	0.71	03 8408 02	E, 7
X3 0394 22	1/8 NPT	5/2	One-way trip (heavy duty) /Spring	0.64	03 8408 02	E, 8
X3 0472 22	1/8 NPT	5/2	Antenna /Spring	0.66	–	E, 9
03 0600 22	1/4 NPT	3/2	Plunger /Spring	0.75	03 8602 02	B, 1
03 0602 22	1/4 NPT	3/2	Roller /Spring	0.75	03 8602 02	B, 3
03 0611 22	1/4 NPT	3/2	Roller lever /Spring	0.9	03 8602 02	B, 6
03 0609 22	1/4 NPT	3/2	Roller /Pilot	0.86	03 8612 02	D, 3
03 0624 22	1/4 NPT	3/2	Roller lever /Pilot	0.99	03 8612 02	D, 6
X3 0640 22	1/4 NPT	5/2	Plunger /Spring	1.01	03 8602 02	B, 2
X3 0642 22	1/4 NPT	5/2	Roller /Spring	1.01	03 8602 02	B, 3
X3 0651 22	1/4 NPT	5/2	Roller lever /Spring	1.17	03 8602 02	B, 6
X3 0649 22	1/4 NPT	5/2	Roller /Pilot	1.1	03 8612 02	D, 3
X3 0664 22	1/4 NPT	5/2	Roller lever /Pilot	1.26	03 8612 02	D, 6

Super X

Manually & mechanically actuated spool valve

In-line

3/2, 5/2 & 5/3, 1/8", & 1/4" NPT

Manual

Model	Port size	Function	Actuation	Mid position	Color	Wt lb	Service kits	Drawing number
03 0404 22	1/8 NPT	3/2	Button/spring	–	Black	0.33	03 8408 02	A, 10
03 0366 22	1/8 NPT	3/2	Button (palm)/spring	–	Red	0.64	03 8408 02	A, 11
03 0367 22	1/8 NPT	3/2	Button (palm)/spring	–	Green	0.64	03 8408 02	A, 11
03 0368 22	1/8 NPT	3/2	Button (palm)/spring	–	Black	0.64	03 8408 02	A, 11
03 0414 22	1/8 NPT	3/2	Button (shrouded)/spring	–	Black	0.46	03 8408 02	A, 12
03 0408 22	1/8 NPT	3/2	Button/pilot	–	Black	0.49	03 8408 02	D, 10
03 0420 22	1/8 NPT	3/2	Button/pilot	–	Green	0.49	03 8408 02	D, 10
03 0421 22	1/8 NPT	3/2	Button/pilot	–	Red	0.49	03 8408 02	D, 10
03 0299 22	1/8 NPT	3/2	Emergency stop/twist ring	–	Red	0.68	03 8473 02	A, 13
03 0335 22 801	1/8 NPT	3/2	Button (palm)/key	–	Red	0.82	03 8408 02	A, 14
03 0438 22	1/8 NPT	3/2	Lever/spring	–	Black	0.62	03 8408 02	A, 17
03 0426 22	1/8 NPT	3/2	Lever knob/spring	–	Black	0.55	03 8408 02	A, NA
03 0437 22	1/8 NPT	3/2	Lever/lever	–	Black	0.64	03 8408 02	A, 17
03 0403 22	1/8 NPT	3/2	Toggle/toggle	–	Black	0.35	03 8408 02	A, 16
03 0425 22	1/8 NPT	3/2	Knob/knob	–	Black	0.37	03 8408 02	A, 10
03 0424 22	1/8 NPT	3/2	Knob/knob or pilot	–	Black	0.46	03 8408 02	D, 10
03 0298 22	1/8 NPT	3/2	Rotary knob/rotary knob	–	Black	0.64	03 8408 02	A, 19
03 0418 22 801	1/8 NPT	3/2	Key/key	–	Chrome	0.79	03 8408 02	A, 20
03 0481 22	1/8 NPT	3/2	Pedal/spring	–	Black	2.27	03 8408 02	21
03 0483 22	1/8 NPT	3/2	Pedal/pedal	–	Black	2.36	03 8408 02	21
X3 0444 22	1/8 NPT	5/2	Button/spring	–	Black	0.57	03 8408 02	E, 10
X3 0386 22	1/8 NPT	5/2	Button (palm)/spring	–	Red	0.88	03 8408 02	E, 11
X3 0387 22	1/8 NPT	5/2	Button (palm)/spring	–	Green	0.88	03 8408 02	E, 11
X3 0388 22	1/8 NPT	5/2	Button (palm)/spring	–	Black	0.88	03 8408 02	E, 11
X3 0454 22	1/8 NPT	5/2	Button (shrouded)/spring	–	Black	0.71	03 8408 02	E, 12
X3 0455 22	1/8 NPT	5/2	Button (shrouded)/spring	–	Green	0.71	03 8408 02	E, 12
X3 0456 22	1/8 NPT	5/2	Button (shrouded)/spring	–	Red	0.71	03 8408 02	E, 12
X3 0448 22	1/8 NPT	5/2	Button/pilot	–	Black	0.75	03 8408 02	G, 10
X3 0460 22	1/8 NPT	5/2	Button/pilot	–	Green	0.75	03 8408 02	G, 10
X3 0461 22	1/8 NPT	5/2	Button/pilot	–	Red	0.75	03 8408 02	G, 10
X3 0465 22	1/8 NPT	5/2	Knob, push/knob, pull	–	Black	0.62	03 8408 02	E, 18
X3 0299 22	1/8 NPT	5/2	Emergency stop/twist ring	–	Red	1.19	03 8473 02	E, 13
X3 0375 22 801	1/8 NPT	5/2	Button (palm)/key	–	Red	1.06	03 8408 02	E, 14
X3 0478 22	1/8 NPT	5/2	Lever/spring	–	Black	0.88	03 8408 02	E, 16
X3 0466 22	1/8 NPT	5/2	Lever knob/spring	–	Black	0.62	03 8408 02	E, NA
X3 0443 22	1/8 NPT	5/2	Toggle/toggle	–	Black	0.6	03 8408 02	E, 16
X3 0477 22	1/8 NPT	5/2	Lever/lever	–	Black	0.88	03 8408 02	E, 17
X3 0464 22	1/8 NPT	5/2	Knob/knob or pilot	–	Black	0.71	03 8408 02	G, 10
X3 0298 22	1/8 NPT	5/2	Rotary knob/rotary knob	–	Black	0.88	03 8408 02	E, 19
X3 0458 22 801	1/8 NPT	5/2	Key/key	–	Chrome	1.04	03 8408 02	E, 20
X3 0482 22	1/8 NPT	5/2	Pedal/spring	–	Black	2.47	03 8408 02	22
X3 0484 22	1/8 NPT	5/2	Pedal/pedal	–	Black	2.6	03 8408 02	22
X3 3438 22	1/8 NPT	5/3	Lever/spring/lever	APB	Black	1.87	03 8408 02	J, 16
X3 3478 22	1/8 NPT	5/3	Lever/spring/lever	COE	Black	1.87	03 8408 02	J, 16
X3 3437 22	1/8 NPT	5/3	Lever/lever/lever	APB	Black	0.97	03 8408 02	J, 16
X3 3477 22	1/8 NPT	5/3	Lever/lever/lever	COE	Black	0.97	03 8408 02	J, 16
03 0604 22	1/4 NPT	3/2	Button/spring	–	Black	0.77	03 8602 02	B, 23
03 0608 22	1/4 NPT	3/2	Button/pilot	–	Black	0.93	03 8612 02	D, 23
03 0638 22	1/4 NPT	3/2	Lever/spring	–	Black	2.34	03 8602 02	B, 22
03 0637 22	1/4 NPT	3/2	Lever/lever	–	Black	1.08	03 8602 02	B, 22
03 0625 22	1/4 NPT	3/2	Knob/knob	–	Black	0.82	03 8602 02	B, 24
03 0627 22	1/4 NPT	3/2	Knob/knob or pilot	–	Black	0.9	03 8612 02	D, 24
03 0681 22	1/4 NPT	3/2	Pedal/spring	–	Black	2.71	03 8602 02	21
03 0683 22	1/4 NPT	3/2	Pedal/pedal	–	Black	2.8	03 8602 02	21
X3 0644 22	1/4 NPT	5/2	Button/spring	–	Black	1.04	03 8602 02	F, 23
X3 0648 22	1/4 NPT	5/2	Button/pilot	–	Black	1.19	03 8612 02	H, 23
X3 0678 22	1/4 NPT	5/2	Lever/spring	–	Black	1.32	03 8602 02	E, 22
X3 0677 22	1/4 NPT	5/2	Lever/lever	–	Black	1.35	03 8602 02	E, 22
X3 0665 22	1/4 NPT	5/2	Knob/knob	–	Black	1.08	03 8602 02	21
X3 0682 22	1/4 NPT	5/2	Pedal/spring	–	Black	2.93	03 8602 02	21
X3 0684 22	1/4 NPT	5/2	Pedal/pedal	–	Black	3.06	03 8602 02	J, 22
X3 3638 22	1/4 NPT	5/3	Lever/spring/lever	APB	Black	1.06	03 8602 02	J, 22
X3 3678 22	1/4 NPT	5/3	Lever/spring/lever	COE	Black	1.06	03 8602 02	J, 22
X3 3637 22	1/4 NPT	5/3	Lever/lever/lever	APB	Black	1.43	03 8602 02	J, 22
X3 3677 22	1/4 NPT	5/3	Lever/lever/lever	COE	Black	1.43	03 8602 02	J, 22

APB = All Ports Blocked COE = Center Open Exhaust

Super X

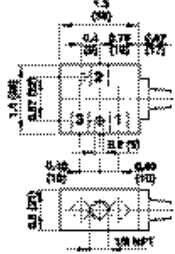
Manually & mechanically actuated spool valve

In-line

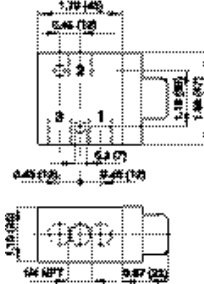
3/2, 5/2 & 5/3, 1/8" & 1/4" NPT

Dimensions in inches (mm)

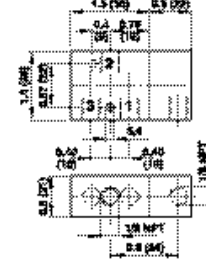
A 1/8" NPT, 3/2 Spring return, basic body



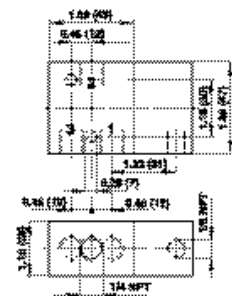
B 1/4" NPT, 3/2 Spring return, basic body



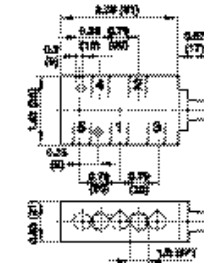
C 1/8" NPT, 3/2 Pilot return, basic body



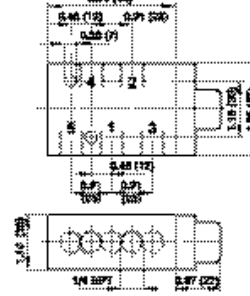
D 1/4" NPT, 3/2 Pilot return, basic body



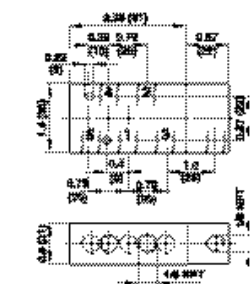
E 1/8" NPT, 5/2 Spring return, basic body



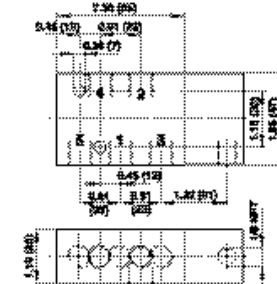
F 1/4" NPT, 5/2 Spring return, basic body



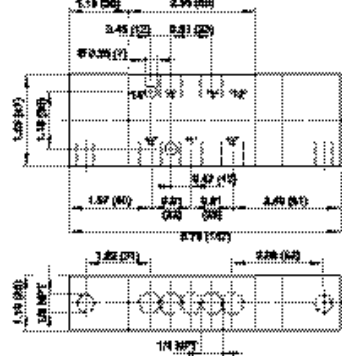
G 1/8" NPT, 5/2 Pilot return, basic body



H 1/4" NPT, 5/2 Pilot return, basic body



J 1/4" NPT, 5/3 Spring return, basic body



1 Plunger Spring Return



2 Plunger Pilot Return



Super X

Manually & mechanically actuated spool valve

In-line

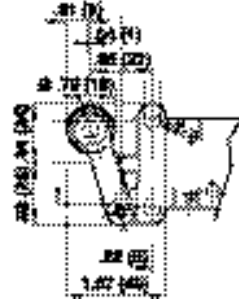
3/2, 5/2 & 5/3, 1/8", & 1/4" NPT

Dimensions in inches (mm)

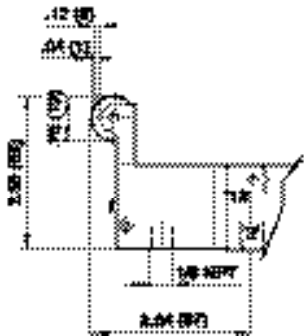
3 Roller



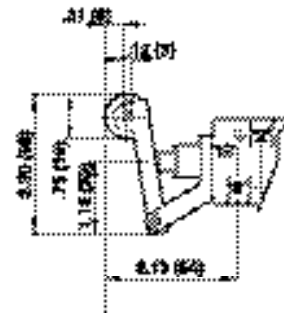
4 Heavy Duty Roller Lever



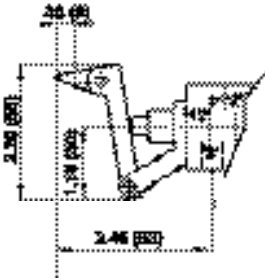
5 Sensitive Roller Lever



6 Roller Lever



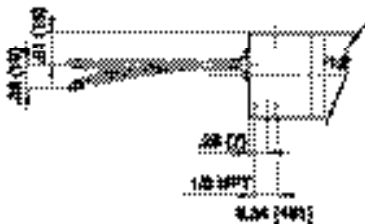
7 One-way Trip



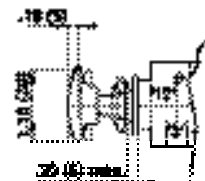
8 Heavy Duty One Way Trip



9 Antenna



10 Button Operated



Super X

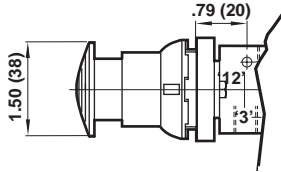
Manually & mechanically actuated spool valve

In-line

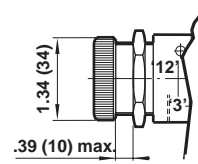
3/2, 5/2 & 5/3, 1/8" & 1/4" NPT

Dimensions in inches (mm)

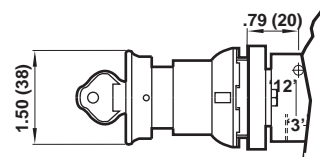
11 Button (Palm) Operated



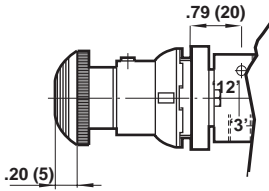
12 Button (Shrouded) Operated



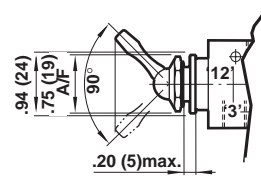
14 Button (Palm) Operated Key Return Valve



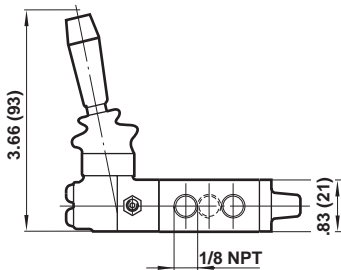
13 Palm Button Operated, Twist Return Valve (Emergency Stop)



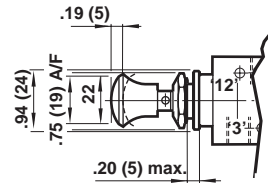
16 Lever Operated



17 Lever Operated



18 Knob Operated



Super X

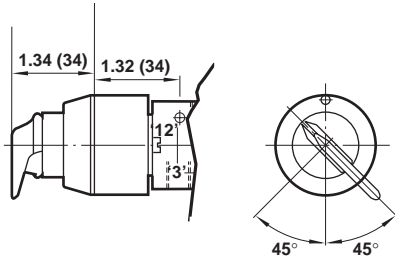
Manually & mechanically actuated spool valve

In-line

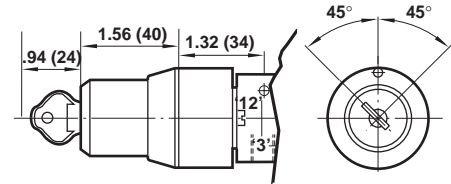
3/2, 5/2 & 5/3, 1/8", & 1/4" NPT

Dimensions in inches (mm)

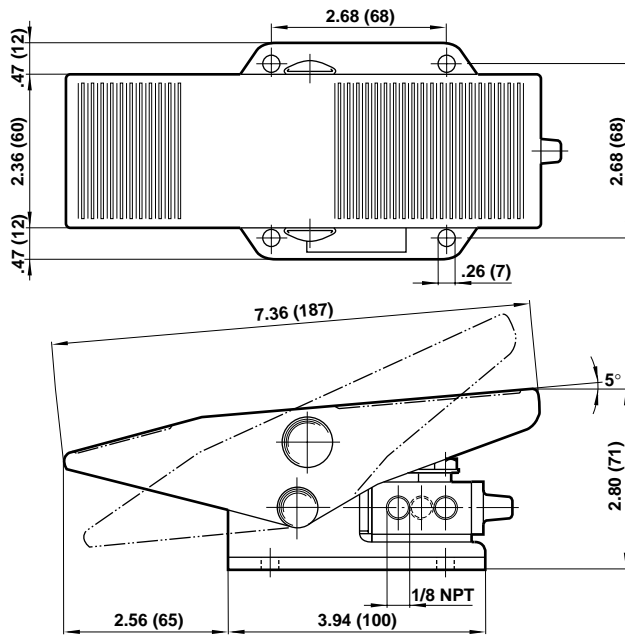
19 Rotary Knob Operated Rotary Knob Return Valve



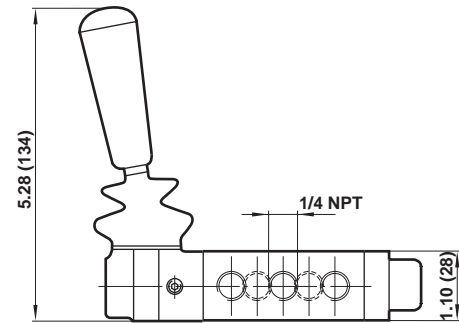
20 Key Operated Key Return Valve



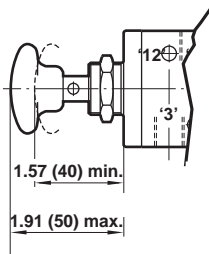
21 Pedal



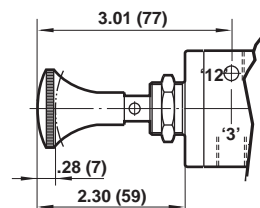
22 Lever Operated Valves



23 Button Operated Pilot Return Valve

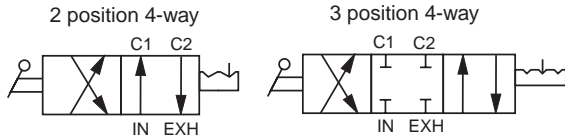


24 Knob Operated Knob Return Valve



VHLA Series Rotary Hand Valves

1/4", 3/8", and 1/2" NPT porting



Aluminum die casting design for heavy applications

Detented center position

Easy to grasp and rotate handle

Cv's of 0.4 to 3.1

Port sizes of 1/4", 3/8", and 1/2"

2 or 3 position functions available

Technical Data

Fluid: Compressed air

Maximum operating pressure: 140 psi (9.7 bar)

Temperature Range: 40° to 140°F* (5° to 60°C).

*With a dew point of supply air less than air temperature below 35°F (2°C).

Flow:	1/4"	Cv 0.4
	3/8"	Cv 1.1
	1/2"	Cv 3.1

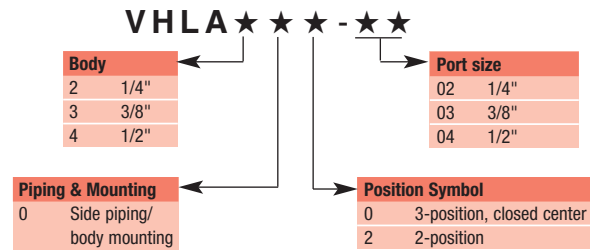
Materials of Construction

Body: Die cast aluminum

Order information

Port Size	Function	Model Number
1/4"	3 position, 4-way	VHLA200-02
1/4"	2 position, 4-way	VHLA202-02
3/8"	3 position, 4-way	VHLA300-03
3/8"	2 position, 4-way	VHLA302-03
1/2"	3 position, 4-way	VHLA400-04
1/2"	2 position, 4-way	VHLA402-04

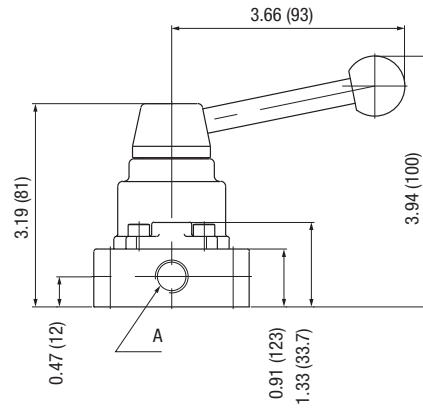
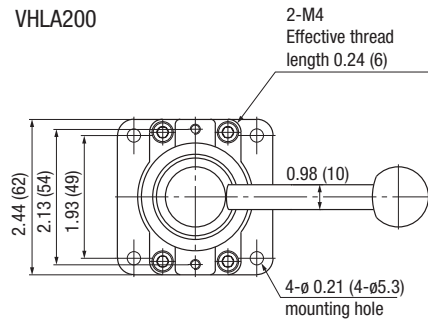
Options deconfigurator



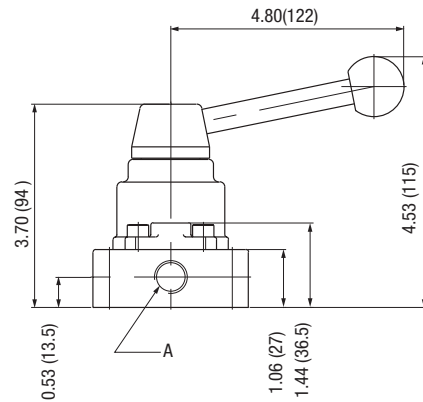
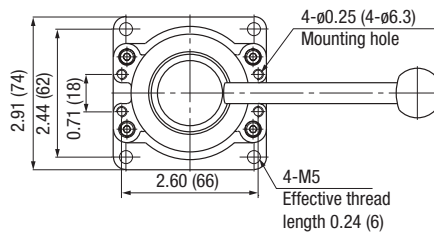
VHLA Series Rotary Hand Valves

1/4", 3/8", and 1/2" NPT porting

VHLA200



VHLA300



VHLA400

